

Queen City Stitch Retreat 2024 Pattern



DMC

- 310 (2 skeins)
- 317
- 349 *
- 451
- 452
- 453

Floss List

- ▲ 543
- 552
- ✱ 606 *
- ☪ 612
- ☑ 722
- ◇ 760 *
- ⊞ 815 *
- ⊞ 817 *
- ☼ 829
- 5 3046
- ☪ 3047
- ▲ 3078

- 3 3799
- J 3836
- ▲ 3865
- 2 Ecru

Treasure Braid

- 4 PB01

* = numbers that convert to blue colors on blue version

Blue Queen DMC conversion

<u>Red chart color</u>	<u>Blue chart color</u>
* 349 and 817	both convert to 3849
* 606	converts to 964
* 760	converts to 747
* 815	converts to 3848

Backstitch Lines

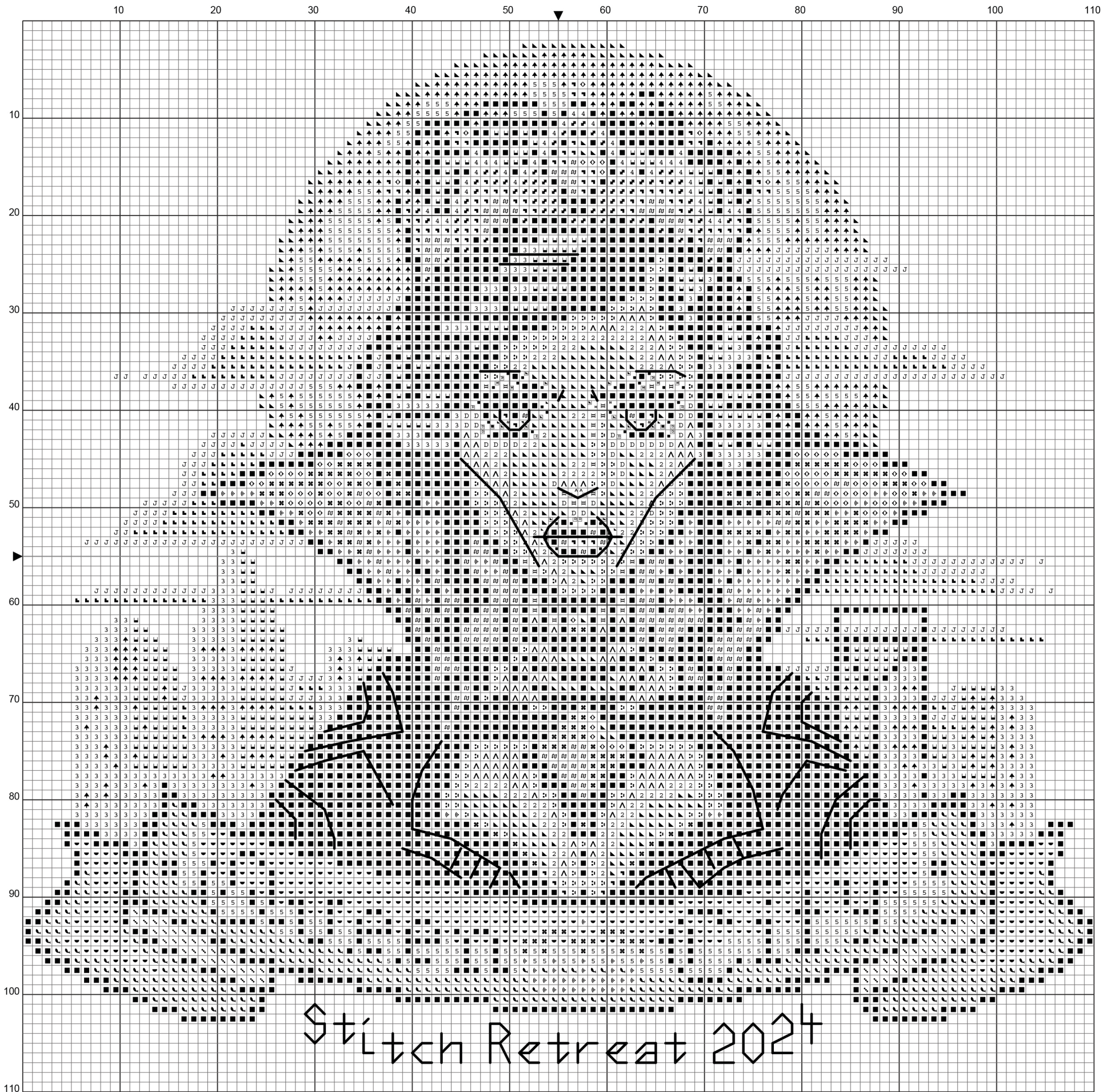
- 310 (Black) Lines on eyes, eyebrows, nose, mouth, hair, and text under banner. (2 strands)
- 451 (Shell Grey Dark) Lines on cheeks (2 strands)
- PB01 (Gold) Lines on body (1 strand)

Stitch Count: 110 x 105 stitches
 Stitched area is 7.9" x 7.5" on 28ct. stitched over 2 threads.
 Stitched area is 6.9" x 6.6" on 32ct. stitched over 2 threads.
Suggested fabric for the red version is 28/32 count linen "Castle Wall".
Suggested fabric for the blue version is 28/32 count linen "Queen".

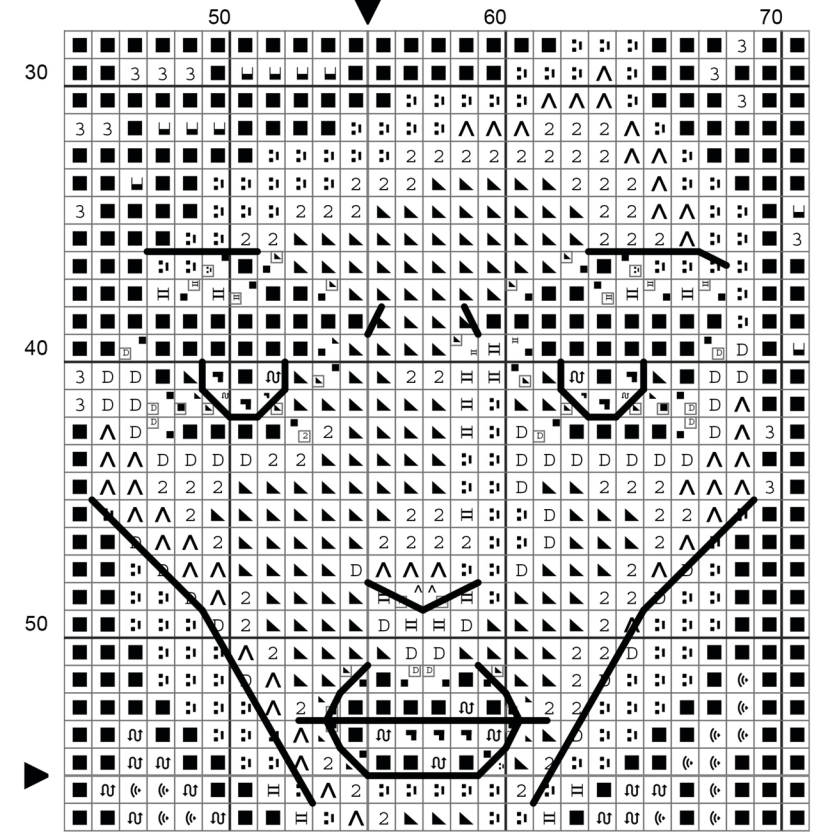
oakcrownstudios.com

Cross Stitch pattern designed by Autumn Lane Stitchery

2024 Queen City Stitch Retreat - Queen of the Night



Face close up



1/4 symbol
 ↙ ↘
 ↖ ↗
 3/4 symbol

Moon with no clouds (Only use for stitching the moon)

